



nHRi™
VENTURI ORIFICE STEAM TRAP

Description

The Delta nHRi™ Venturi Orifice Steam Trap is designed for high-load process applications including heat exchangers, reboilers, process columns, etc.

The nHRi™ has a removable orifice insert. It is recommended that a strainer be fitted upstream of the trap.

Standards

According to Article 3, Section 1.3(a) second indent of Directive 97/23/EC (European Pressure Equipment Directive), this product falls within Category 1.

It also complies with SANS 347:2012 Category SEP.

Certification

Manufacturer's pressure test report and material certification is available with this product. Any additional certification requirements to be stated at time of order.

Sizes and Connections

DN25 (1"), DN40 (1 1/2"), DN50 (2"), DN80 (3"), DN100 (4")

Flanged

BS 4504 , PN16 -100 and ASME B16.5, 150 - 2500

Pressure / Temperature limits

PMA (Maximum Allowable Pressure) 100 bar g (1455psi g)

TMA (Maximum Allowable Temperature) 537°C (999°F)

PMO (Maximum Operating Pressure) 100 bar g (1455 psig)

TMO (Maximum Operating Temperature) 537°C (999°F)

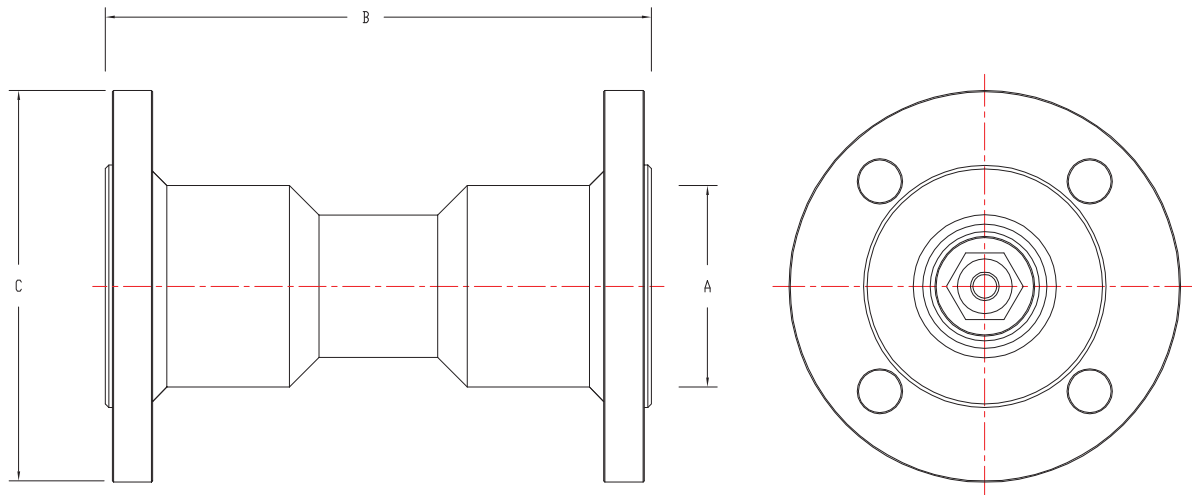
Cold hydraulic test pressure 380 bar g (5530 psi g)

Guarantee

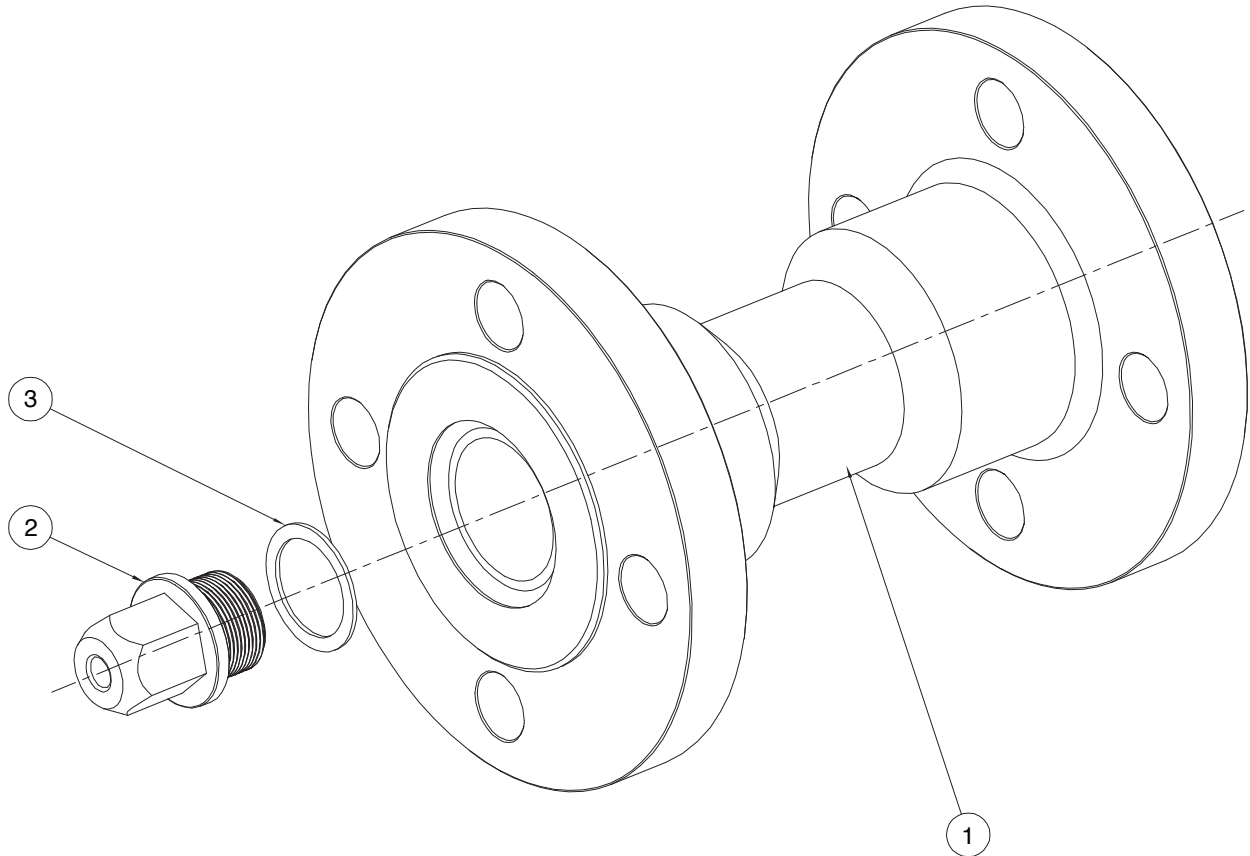
10 year product guarantee as per standard terms and conditions

Dimensions and weights

Size	Connection	A	B	C	Weight
DN25	Flanged	55 mm	160 mm	115 mm	4.4 kg
DN40	Flanged	75 mm	230 mm	150 mm	8.6 kg
DN50	Flanged	85 mm	230 mm	165 mm	10.5 kg
DN80	Flanged	95 mm	350 mm	200 mm	16.5 kg
DN100	Flanged	105 mm	350 mm	220 mm	22.5 kg



Assembly



No.	Part	Material	No.	Part	Torque Settings
1	Flanged Body	ASTM A479 Gr 304	2	Removable Orifice Insert	60 Nm
2	Removable Orifice Insert	ASTM A479 Gr 304			
3	Gasket	Graphite			